

"Promoting the study of wild birds and the conservation of natural resources on Kelleys Island."

# HOOT



# OWL

**Inside...**  
Upcoming Events  
Whip-or-wills  
Oil Painting Gift  
Membership Application or  
Renewal Form

KELLEYS ISLAND AUDUBON CLUB NEWSLETTER FOR

YOU AND ABOUT YOUR NEIGHBORS • FALL, 2003

## KELLEYS ISLAND FEATHERS AND FOLIAGE FESTIVAL

September 27, 2003

**Celebrate Fall migration on Kelleys Island with us!**

**7:00 A.M. - 2:00 P.M. Bird Banding**

With Tom Bartlett, Master Bander

Meet at Long Point

**8:15 A.M. Guided Bird Walk**

With Kevin Metcalf, Naturalist, Cleveland Metroparks

Meet at the North Pond/Boardwalk Parking Lot on Ward Road

(Mud boots may be needed!)

**1:00 P.M. Tree and Foliage Walk**

With Craig Morton, former Kelleys Island State Park Manager,

Manager Grand Lake/St. Mary's State Park

(Mud boots may be needed!)

**10:00 A.M. - 2:30 P.M. Hawk Watch**

With Kevin Metcalf, Naturalist, Cleveland Metroparks

Meet at the Glacial Grooves State Memorial

At the end of Division Street

**All events are free of charge!**

### Upcoming Monthly Meetings

*Pavilion (weather permitting)  
or St. Michael's Hall*

**Thursday, Sept. 18**

6 p.m. Potluck

7 p.m. Speaker—

Dana Bollins, Naturalist

Maumee Bay State Park

"Mighty Phragmites"

**Thursday, Oct. 16**

6 p.m. Potluck

7 p.m. Speaker—

Marty Soski, Country Woodcrafter

Marblehead—

"Meet the Woodcrafter"

### KI Audubon Club

#### 2003 Raffle

First Prize—Hand Carved Loon by Marty Soski

Second Prize—Birding Binoculars

Third Prize—Hand Carved Shorebird by Marty Soski

Tickets are 6/\$5.00 or \$1.00/ea—

Drawing at Oct. meeting—Oct. 16

Proceeds to benefit the Kelleys Island Audubon Club

Need not be present to win. Good Luck!

**For ticket information and purchase contact:**

staff@kelleysislandnature.com or

Peg Cooney at 419-746-2614

Tickets are available for purchase from

Peg or at the Sweet Valley Trading Post,

Vi's Island Treasures, House on Hunting-

ton Lane, and The Inn.

### President's Message

The martins are gone. Just packed up and left. It usually happens around mid August. One day you just realize that they have split. The promise to come back is etched in their DNA. Something like a relative.

I am going to enjoy fall. High winds, low water, cold fronts, warm fronts. Sunshine and sometimes a little snow. The weather controls migration and we have birding opportunities found no place else in Ohio.

The coastline and open water affords easiest viewing for ducks and shorebirds. You don't need to know the names. The enjoyment of seeing the flow of dozens of species resting and refueling is enough for many of us. Go see the movie, "Winged Migration" for the rest of the story.

Any day now the Lake Erie Water Snake will be birthing. Watch for them crossing the road. I haven't seen many this summer and I have looked. The snake didn't ask to be protected. They couldn't. We should.

Enjoy the coming season. Keep your sweater handy, your feeders full and once in a while...look up for eagles.

Pat Hayes



*Bird banding is always a highlight of the Fall Feathers and Foliage event—7 a.m. to 2 p.m. with master bander Tom Bartlett—Long Point.*

**DUES REMINDER—2003 DUES ARE NOW PAST DUE**

## Mary Ann Clady Donates Painting to KI Audubon

Mary Ann's painting medium is watercolor. Her work is mostly representational in format, and her subject matter includes florals, still-life's, landscapes and seascapes. She is a former art teacher who currently works out of a studio at her home in Shelby, OH. She is showing her work at the Mansfield Art Center's Gallery Shop or she can be reached at 419 896-2379.

The Kelleys Island Audubon Club is the grateful recipient of one of Mary Ann's watercolors of the Marblehead Lighthouse.

The club is having a silent auction in order to raise funds to support the Monthly Bird Census Project.

For information on the auction please contact the Kelleys Island Audubon Club at 419-746-2258 or e-mail us a [staff@kelleysislandnature.com](mailto:staff@kelleysislandnature.com).

**Kelleys Island Audubon Club**  
**Kelleys Island, Ohio**  
**419 746-2258**

Many thanks Mary Ann for the tremendous donation!



## Those Charismatically Challenged Spiders

Lori Hayes

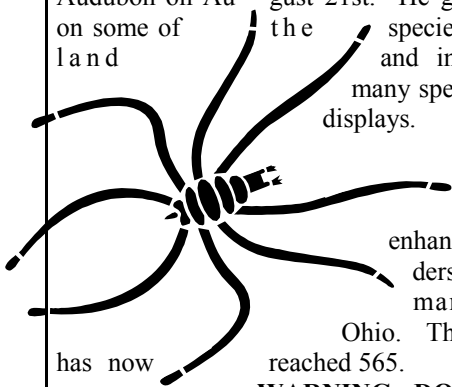
If you do not like spiders than you are not alone. Although if you heard Richard Bradley's presentation you may like them just a little bit more now.

Richard Bradley is the Associate Professor of Biology at Ohio State University and gave the program at the Kelleys Island Audubon on August 21st. He gave an interesting overview on some of the species found here on Kelleys Island and in Ohio. He also brought many specimens - dead and alive and displays.

Bradley is the head of the Ohio Spider Survey. The surveys goal is to enhance the understanding of spiders in Ohio and to find out how many species reside in Ohio. The number of spider species has now reached 565.

**WARNING - DO NOT SPRAY FOR SPIDERS**

During the question and answer period, someone asked if we should spray for spiders. Professor Bradley said that the spray is more detrimental to humans than the spiders themselves. So don't spray for spiders! It's harmful to your health and a waste of



## Duke DuShane Memorial Established at Kelleys Island State Park

Judy DuShane

On Tues. July 8, the steamship "Adventure" once more visited Kelleys Island, almost 100 years after it sunk at the North Bay on Kelleys Island. A model of the "Adventure" made by model builder Roger Jensen of Martin OH was given over to Kelleys Island State Park Manager Mike Monette by Kelleys Island Audubon Club President Pat Hayes in a short ceremony. A case of oak and glass was made to display the model by Steve Sheridan of Findlay OH who is a diver and charter boat captain. Dive slates developed by the Ohio Archeological Survey Team describing the wrecks of the Adventure, the Prince and the Hanna as they appear now (all three wrecks are near the shores of Kelleys at North Bay or off the eastern side), will be available for lending at the State Park Office.



The display was funded by the DuShane Memorial Fund through the Kelleys Island Audubon Club in memory of Duke DuShane. Duke was a scuba diving instructor who taught over 1000 students to dive during his career. Duke was a member both of the Archeological Survey Team and the Ohio Coastal Management's advisory committee that conceived the idea of the display. Contact was made with Roger Jensen through the Great Lakes Historical Society where he is a member of a group of model builders who meet at the Inland Seas Maritime Museum. He has put over 400 hours of volunteer time into the building of the model.

## Letter to KIAC

To Kelley's Island Audubon Group:

My husband and I just returned home after spending 2 1/2 days with the Nest With Birds festivities and want to THANK YOU very much for a wonderful event(s). We enjoyed it all and loved seeing all the beautiful warblers.

I did want to also report that on Saturday May 17, 2003 at about 4:45 PM we walked the boardwalk at the North Pond and are pretty confident we saw a worm-eating warbler. It was to the right of the boardwalk (if facing north) at the area where the billboards are that describe the area and have the pictures. It had a striped head, plain back (grayish/olive in color) and wings, i.e. no wing bars. It was about 3 ft off the ground, flitting around in a bush for about one minute or less then was gone. We stayed for 30 min. hoping it would return but it did not. We are not expert birders like Kevin Metcalf, etc., but I am not a novice either and feel confident with ID-ing most warblers. Just wanted to let someone know and also to see if anyone else reported one.

Thanks. Keep up the nice work of offering the Nest with Birds Week.

Here's to excellent birding,

**Peg Rowan McGovern and Bill McGovern**

# Whip-poor-will (*Caprimulgus vociferous*)

Submitted by Delores Cole

The Whip-poor-will, one of the 72 species of birds known as nightjars or goatsuckers, lives in moist forests of the eastern United States and southern Canada. Whip-poor-wills are neotropical migrants, who migrate through Kelleys Island in May from their winter range in Florida and the Gulf coast.



Even though they are nocturnal, they hunt by sight. The best chance to see one (rare) or at least hear one is during a full moon. Just listen along Monagan Road west of the airport. At dusk on Kelleys Island, it is possible to see Common Nighthawks in the southwest sky, and American Woodcocks all around you, and hear Whip-poor-wills and Chuck-wills-widows to the west and east of you, all at the same time.

## Description:

- Outer parts are mottled grayish-brown (color of dried leaves)
- Under parts are pale with gray and black mottling
- Long rounded tails and rounded wings
- Males have black throats separated from the breast by a necklace of white
- Males have white outer tail feathers
- Females have a thinner and buffier

- necklace
- 9 inches in length
- Short bill and medium length tail
- Small weak feet and short legs, and hop about awkwardly on the ground

## Diet:

- Eats flying insects, such as mosquitoes, large beetles and moths
- Finds prey by sight (dawn, dusk, full moon lit nights)
- Its bill is quite small and it opens into a huge gaping maw when the Whip-poor-will flies after prey
- Forages in flight, wheeling and circling, sometimes gliding and even hovering

**Courtship:** Elaborate courtship displays lead up to mating. A Whip-poor-will female may alight near a calling male, who then walks toward her with an undulating gait, head raised with each step and then lowered. Reaching her, he circles as she bobs, one or both birds calling continuously. Or he may approach her from alternating sides, touching her bill as she trembles.

**Call:** The whip-poor-will is named for the male's repetitive nocturnal calling. The "whip" is sharp, the "poor" falls away, and the "will" - the highest note in the sequence - is a bullwhip snapping in the night. The call carries about half a mile. Listeners close to the calling bird may hear a soft knock sound before each repetition. In Ohio a whip-poor-wills start calling in late April or early May, when males arrive from the south. Whip-poor-wills call mainly at dawn, dusk and during a full moon. Males sing regularly and

repeatedly from a number of perches close to the ground, within their territory and follow a defined route each evening.

**Breeding:** Its breeding cycle is synchronized with the lunar cycle. Whip-poor-wills lay 2 eggs so that they hatch as the moon is waxing. In this way, they have the advantage of maximum moonlight while feeding their growing young. Whip-poor-wills do not build a nest. Eggs, light gray or white, with brown and lilac markings, are laid on a bed of leaves near a log in a small clearing or at the edge of woods. They usually have one brood and it takes 20 days for the birds to fledge. The eggs are incubated by both parents.

**Behavior:** The Whip-poor-will is strictly nocturnal. They perch on branches or sit on the ground or along roadsides, where the birds' eyes gleam red or bright orange in the glare of automobile headlights. This "eyeshine" is caused by a reflective layer at the back of the retina called the tapetum. The tapetum amplifies small amounts of light by passing them back through the retina a second time. Whip-poor-wills fly up to catch moths, mosquitoes, gnats, June bugs and crane flies.

Its soft feathering lets a whip-poor-will fly almost as quietly as an owl and helps the bird intercept moths, many of which can detect, through tympanic membranes, sounds of potential predators.

**Habitat:** Whip-poor-wills live in open woodlands with well-spaced trees and low canopy from south central and southeastern Canada southward to the southeastern United States.

Whip-poor-wills have not been documented to breed on Kelleys Island, but it is certainly worth a try to go and listen for them in May at dusk by Scheele Preserve as they are migrating north.

## Island Meanderings

Kelley Sanderson

Another beautiful Kelleys Island summer is ending. Another summer of beautiful memories of faithful friends, lovely visitors, sunshine, rainbows, storms and rain is etched in our minds. Others envy our Island residences since they see only the physical beauty of the woodlands, the lake, the helpful Islanders and the beautiful sunsets. We know also the reality of the other seasons -- the sleet, ice, ceaseless winds and isolation of winter. Summer memories are better!

The blackouts reminded us of how vulnerable we are to technology. Davis-Besse's tower looms in the mists to the southwest, another reminder of technology's dangers. An errant freighter almost cast us in total darkness as it ripped apart one of our underwater electrical cables. In contrast are the wonders of the natural world which surrounds the Island -- regularly migrating birds which bring us beauty, songs and peace every spring and fall, crickets and fireflies decorate the

night with their squeaks and lights. Tasty bites of perch and walleye are so enjoyable.

Our harvest is just beginning. Of course the mulberries are long gone, and the deer enjoyed them, too. A few ears of sweet corn might survive the nightly raccoon raids, and a few pumpkins will smile their jack-o-lantern faces at Halloween. The reliable zucchini freezes easily and tastes so good in muffins and bread all winter. Apples, plums and pears will soon be pickable, and Bergman's peaches are the best. And nothing tastes better than backyard grown tomatoes!

Think about the colors of summer: purple mulberries, grapes and plums, red apples and tomatoes, yellow corn and pears, orange peaches and pumpkins, green beans and zucchini, also the colors in the rainbows at the end of the rain.

I hope your Island summer memories are colorful all winter long.

## Kelleys Island Audubon Club Membership Form

Name \_\_\_\_\_

Address \_\_\_\_\_

City \_\_\_\_\_ State \_\_\_\_\_ Zip \_\_\_\_\_

Phone \_\_\_\_\_ E-Mail \_\_\_\_\_

### Amount Enclosed:

\_\_\_\_\_ \$15 Individual Member

\_\_\_\_\_ \$25 Family

\_\_\_\_\_ DuShane Memorial Fund

\_\_\_\_\_ Rosetta Navorska Memorial Fund Donation (Bird Census)

\_\_\_\_\_ Pape Memorial Fund Donation (Natural Science Library)

**As a registered 501 (C)3 all contributions to KIAC are tax deductible.**

**Send to:** Kelleys Island Audubon Club  
P.O. Box 42  
Kelleys Island, OH 43438

*Annual membership runs from January 1, through December 30, and should be paid as early in the year as possible. A membership card will be sent to you when your dues are received. Prompt payment will assure that you receive all issues of the Hoot Owl and other important member correspondence.*

## KELLEYS ISLAND—2003 NATURE EVENTS

Sept. 27  
Fall Feathers and  
Foliage Festival

## Kelleys Island Audubon Club Potlucks, Meetings and Programs

Sept 18 , Oct 16, Nov 20

Potlucks are held at 6 p.m., with meeting following at 7.

The July, August and September meetings will be held at the Pavilion on Addison, and the October meeting will most likely be held at St. Michael's Church Hall. The November meeting will held at **Pat** and **Lori Hayes'** home, The Inn.

You do not need to be a member of the KI Audubon Club to attend meetings.

**Kelleys Island Audubon Club**  
P.O. Box 42  
Kelleys Island, OH 43438  
[www.kelleysislandnature.com](http://www.kelleysislandnature.com)

### Board Members

**Pat Hayes**

President

**Peggy Cooney**

Vice President

**June Campbell**

Secretary

**Jean Kuyoth**

Treasurer

**Lloyd Burns**

**Marvin Robinson**

Pape Fund

**Lori Hayes**

Events Coordinator

**Judy DuShane**

Grants Coordinator

**Delores Cole**

Webmaster

**Jacque Kranyak**

Hoot Owl Editor

### **REMINDER:**

*As a 501(C)3, the KIAC is a registered charity, therefore, all gifts and donations to it are tax deductible.*

**2004 KIAC Calendars Are In—\$12.00 Featuring 12 NEW island scenes!!!**

**To purchase, contact a KIAC board member, purchase at the Sweet Valley Trading Post or next KIAC meeting.**